



*Vernal, Utah*  
*Gateway to Recreation & Adventure*

New Heights in  
Apartment Living  
Vernal, Utah

Now Taking Applications!  
Call Today: 435.789.5000  
[www.ashleycreekvillage.com](http://www.ashleycreekvillage.com)



210 E. 600 S.  
Vernal, UT 84078  
435.789.5000  
[manager@ashleycreekvillage.com](mailto:manager@ashleycreekvillage.com)



This institution is an Equal Opportunity provider and employer.

Office Hours:  
Mon. - Fri. 8-5



New Heights in Apartment Living



435.789.5000

210 E. 600 S. Vernal, UT 84078

[www.ashleycreekvillage.com](http://www.ashleycreekvillage.com)





## VERNAL'S PREMIER PROPERTY



WELCOME TO  
ASHLEY CREEK VILLAGE!

Ashley Creek Village is centrally located in Vernal, Utah, the economic hub of the Uintah Basin.

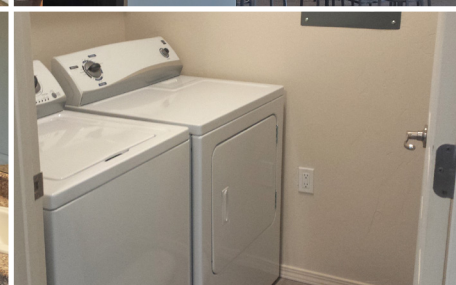
Vernal's Premier Property includes plush, beautiful landscaping that is 100% maintained throughout the seasons.

Our onsite maintenance and management team ensures that our tenants' satisfaction is always top priority. Our residents enjoy living on a quiet street that is only minutes from the best shopping and dining in eastern Utah. We are within walking

distance of the new Uintah Community Center and only a short drive from outdoor adventure sites like the Uintah Mountains, the Green River and Flaming Gorge, and Dinosaur National Monument.

Vernal is home to the Utah Field House of Natural History Museum. The Field House is a natural partner with nearby Dinosaur National Monument, home of the largest deposit of Jurassic era fossils found to date. Flaming Gorge dam and reservoir, situated in the Ashley National Forest, is located just a short drive north of Vernal. Ashley National Forest offers fantastic opportunities for hiking, fishing, camping, white water rafting and horseback riding.

- Amenities:**
- Onsite Management / Full-time Maintenance
  - Playground
  - Basketball Court
  - 24-hour Fitness with Key Card Access
  - Private Balconies with Storage
  - Cable TV
  - Central Air
  - Each Unit has Washer / Dryer
  - Clubhouse Available by Reservation
  - Garages Available



## One, Two & Three Bedroom Floor Plans\*

Thank you for taking the time to inquire about living at Ashley Creek Village Apartments! We have compiled the following information for you regarding our apartments, requirements and lease terms. If you have further questions, please inquire with one of our leasing staff, or call us at **435-789-5000**.

No Smoking • No Pets



### 1 Bedroom

735 sq. ft., 1 bed, 1 bath

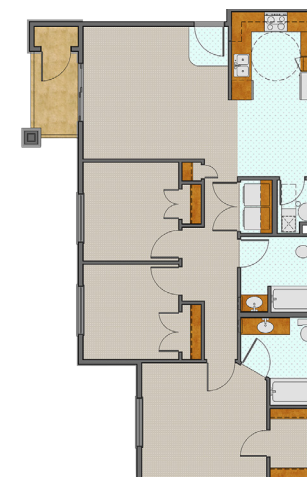
Rent



### 2 Bedroom

961 sq. ft., 2 bed, 2 bath

Rent



### 3 Bedroom

1155 sq. ft., 3 bed, 2 bath

Rent

\* Your monthly rent includes the following utilities: Water/Sewer/Trash and Basic cable.  
\* Our Residents are responsible to pay electricity and gas.

\* Initial Lease Terms:  
6, 9, or 12 month lease is standard. Monthly rent does not vary depending on this term.

\* Application Fee and Deposit Information:  
• \$30.00 Application Fee per adult 18 and older.  
• \$500.00 Security Deposit. The Security Deposit is dependent on credit; additional deposit may be required. The Security Deposit is due when you sign your apartment lease and must be paid before moving into your apartment.  
• \$100.00 Holding Deposit. The purpose of the Holding Deposit is to hold an apartment from the date of the application to the date of lease initiation. The Holding Deposit will be applied toward the Security Deposit. Please see application paperwork for more information.

\* Payment Options:  
For security reasons, we **do not** accept cash. You may make payment using personal check, cashier's check or money order. Please note: a separate check or money order must be submitted for Application Fee(s) and Security/Holding Deposit(s).



### Our Clubhouse & Amenities

